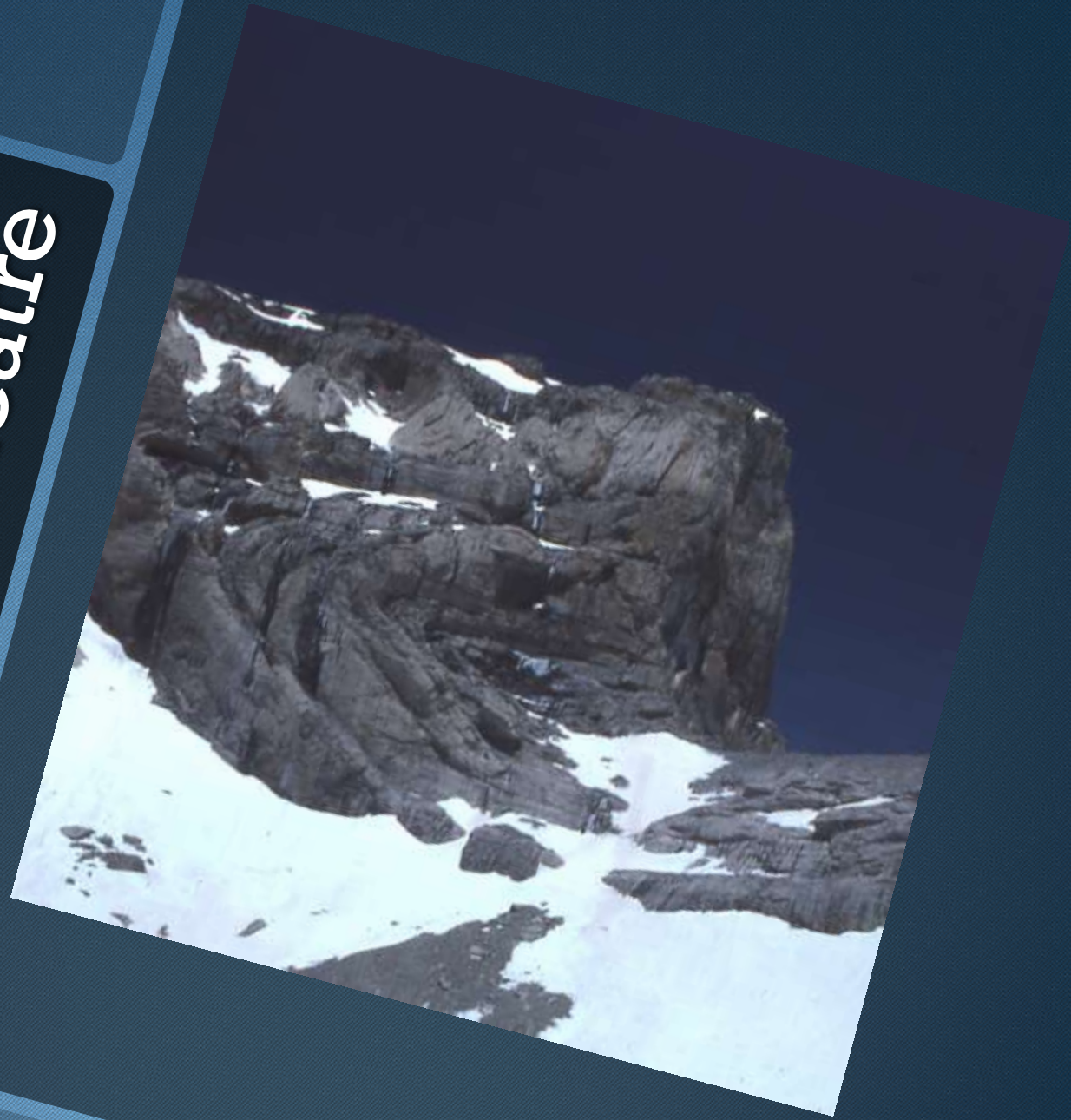


Gigapan & Photosynth Images For
Teaching Mobility Impaired Students
Geological Observational Skills



Dr Ian Stimpson
School of
Physical &
Geographical
Sciences
Keele
University

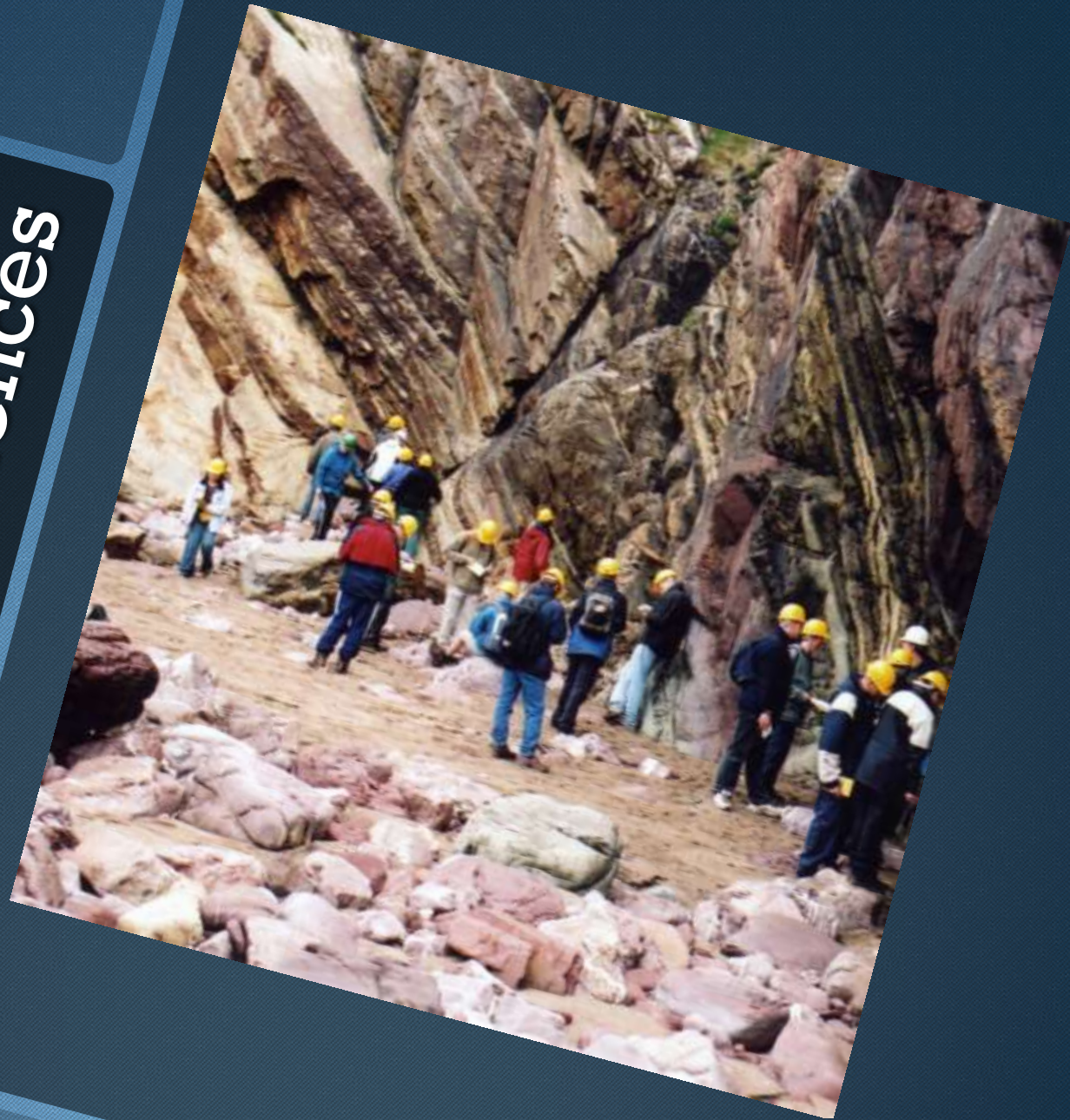
Our lecture theatre



Reasonable Adjustment



Providing
alternative
experiences



Alternative technologies



The GigaPan System



The GigaPanSM process allows users to upload, share, and explore brilliant gigapixel+ panoramas from around the globe.



This is [Complex fault and fold structure](#), taken by [Ian Stimpson \(Stimmo\)](#). Selected by [rschott](#) as part of the [Earthquakes, Faults, and Landslides](#) collection.

share

Imagine your website or blog with a brilliant GigaPan image.

Love exploring panoramas? Share with others! Embed explorable GigaPan images in your website or blog. [Learn more.](#)

create

THE GIGAPAN EPIC SERIES

Robotic camera mounts for gigapixel panoramas



The **GigaPan Epic** and new **Epic 100** make it easy and fun to capture brilliant high resolution panoramas with a broad range of point and shoot digital cameras, including several DSLRs. The **GigaPan Stitcher** software comes with the Epic Series and automatically combines photos to create gigapixel panoramas then uploads them to [GigaPan.org](#). [Learn more.](#)

partners

GigaPan was developed by Carnegie Mellon University in collaboration with NASA Ames Intelligent Robotics Group, with support from Google.



CarnegieMellon Google

view

FIND KEYWORDS OR LOCATION

 search

MOST POPULAR GIGAPANS



[Alpestein](#)

POPULAR TAGS

[fofs](#), [beta](#), [park](#), [spain](#), [panorama](#), [river](#), [lake](#), [draft-composite](#), [california](#), [half-size](#)

MOST RECENT SNAPSHOTS



[Santa Bárbara](#) [Tumba do...](#) [Highrise...](#) [Exhaust stack](#) [Vessel in dry...](#)

Global Connections

EDUCATION AND RESEARCH

Using the power of images to connect people, places and events. Gigapixel panoramas provide new vision and discovery. [Learn more.](#)

news & events

GIGAPAN NEWS

BBC Click! selects the GigaPan EPIC as the [top technology of 2009!](#)

Embedding is now easier than ever! Embed your gigapixel panoramas on websites and blogs, including the ability to zoom into incredible detail. See embedded GigaPans at [Golf.com](#) and [SportsIllustrated.com](#).

Find us on [Facebook](#). Follow us on [Twitter](#).

MEDIA COVERAGE & REVIEWS

[Digital Image Maker](#) posted a comprehensive review of the Epic 100, including a great video demonstration.

WIRED gives the Epic 100 a great hands-on review on the [Gadget Lab](#).

The BBC technology program Click! featured the Epic, highlighting its visually stunning results. See the [online article](#).

[Popular Science](#) reports on the GigaPan Epic and includes an image from the Explore Chicago exhibit at the O'Hare Airport.

CNN's John Levs explores the GigaPan panorama of Barack Obama's inauguration. [See the video](#)



LINKS

Stephen King fans hide in [this GigaPan](#), holding words from conclusion of his [Lovecraftian novel](#), "In the Dark." Zoom into the North Park of

Make your own GigaPans with the low-cost GigaPan Epic

Help



View All



Snapshots (1)

[Take a Snapshot](#) Sort by: [Most Recent](#) | [Most Popular](#) | [Creator](#) Show me: [Stimmo's Snapshots](#) | [My Snapshots](#)



Only one snapshot matches the selected filter

[Launch Full Screen Viewer](#) [Take a Snapshot](#) [Email this Panorama](#) [Bookmark this Panorama](#) [View in Google Earth 4.2+](#)

about this panorama

explore score
0

Pillow Lava Detail, Pen Anglas
By: [Ian Stimpson \(Stimmo\)](#) on May 13, 2009 ([Edit this panorama](#))
Tags: [geology](#), [mistique](#)

Pillow Lava Detail, Pen Anglas, Goodwick, Pembrokeshire, Wales

Date Taken: May 13, 2009
Date Added: May 13, 2009
Bookmarked: 1 time
Total Views: 109 views
Snapshots: 1
Size: 0.24 gigapixels
Field of View: 69.38 degrees wide, 35.17 degrees high
Stitcher Notes: [view](#)

comments

No comments.

Imagery ©2
[Add Comment](#)

Map Satellite Hybrid

Latitude: 52.026 Longitude: -4.9918

Help



View All





Image NASA
© 2009 Europa Technologies
Image © 2009 Bluesky, Infoterra Ltd & COWI A/S
© 2009 Tele Atlas



© 2009 Google

Imagery Date: 2006

52°01'31.27" N 4°59'27.27" W elev 1 m

Eye alt 141 m

Case Study : Porth Clais



Case Study : Marloes



Case Study : Freshwater West



Case Study: West Angle



Photosynth



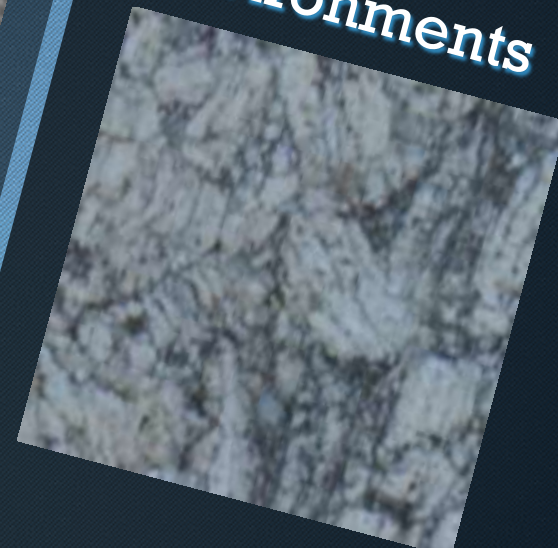
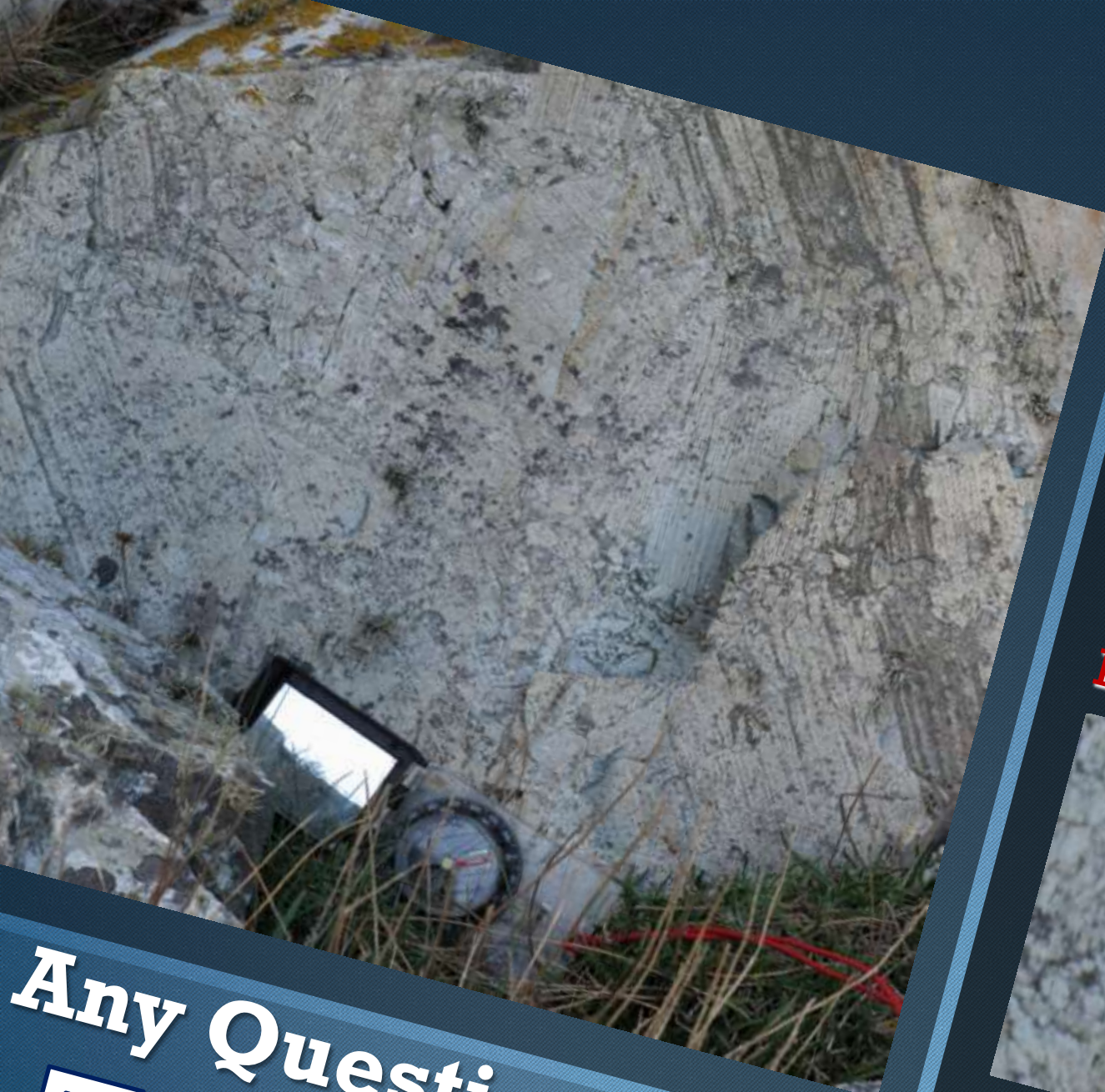
Conclusions

- ❖ Geology faces particular challenges with mobility impaired students on field courses
- ❖ Gigapan and Photosynth have potential to provide alternative experiences that could meet intended learning outcomes

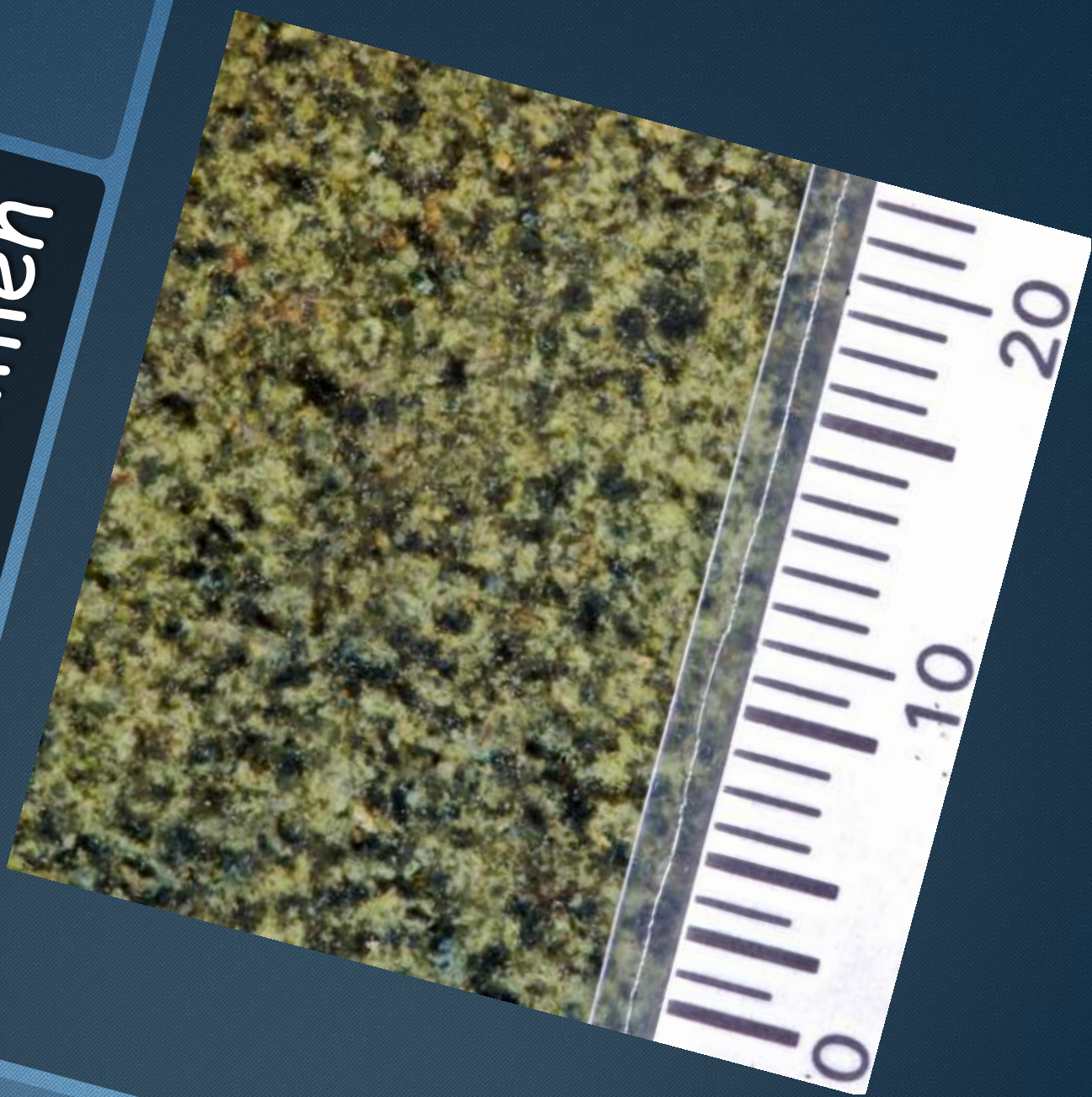
Ian G.
Stimpson

**Mobility
Impaired
Students:
Teaching
In
Quite
Unsuitable
Environments**

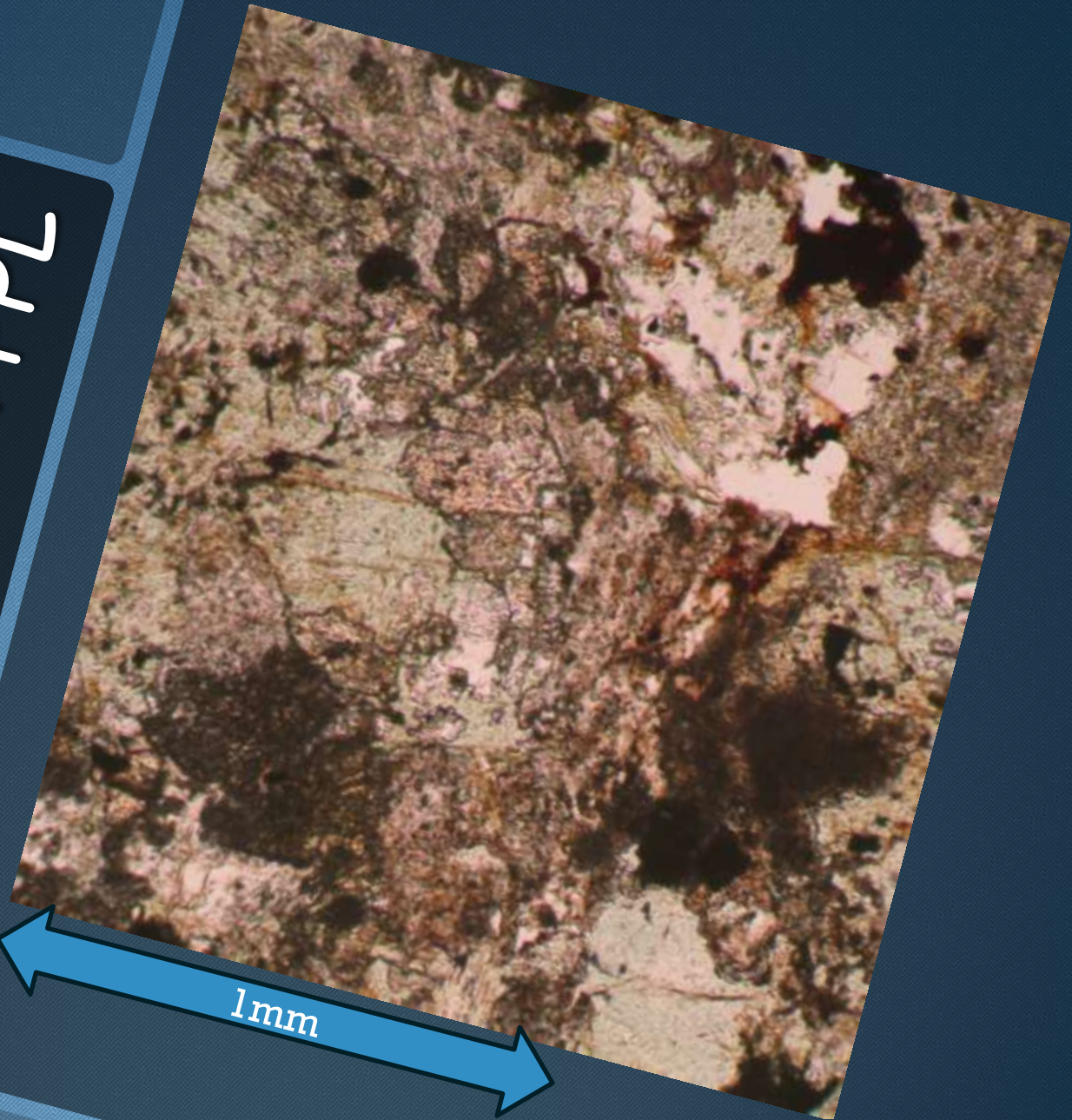
Any Questions?



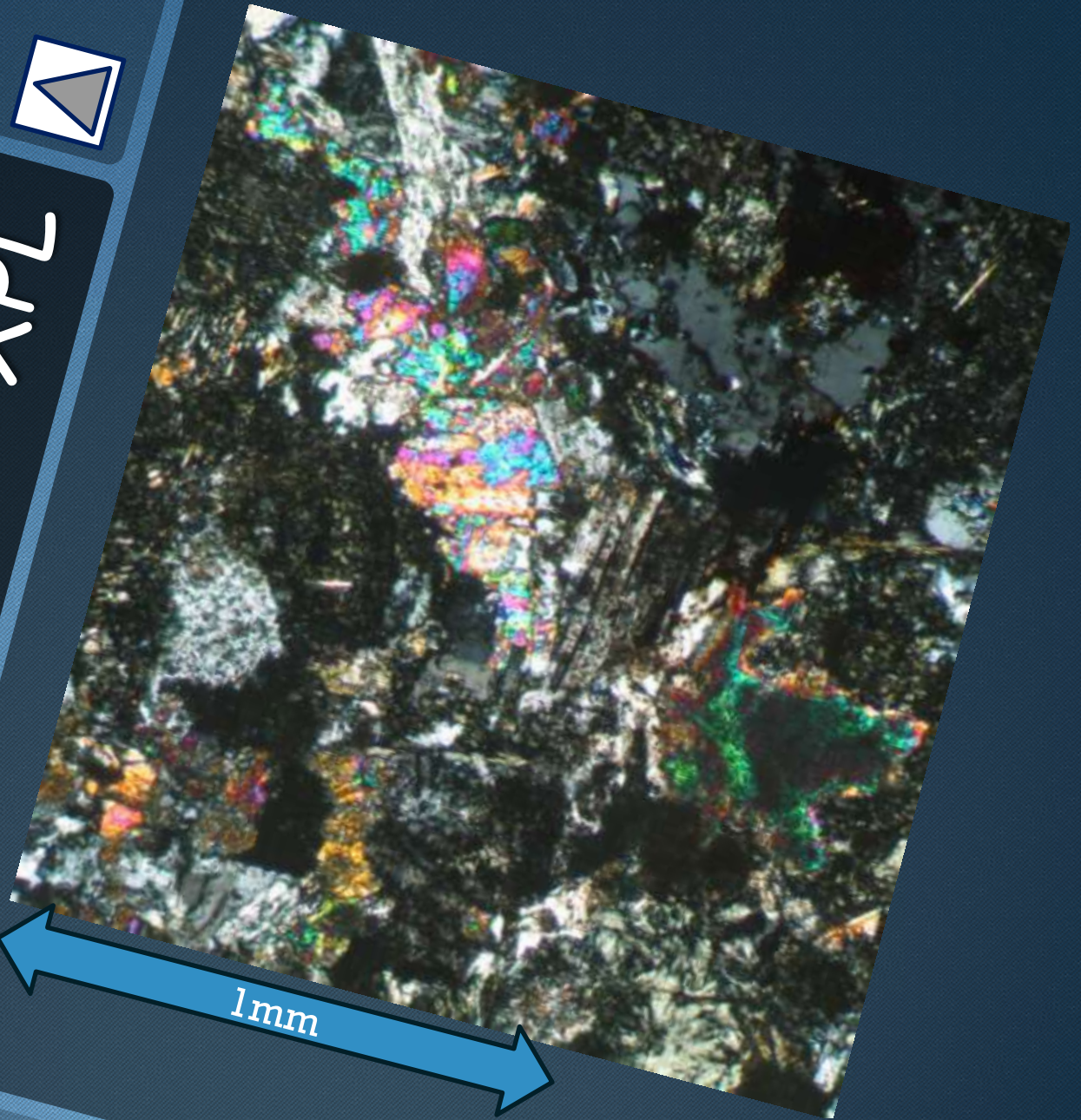
Sill Centre: Hand Specimen



Sill Centre : PPL

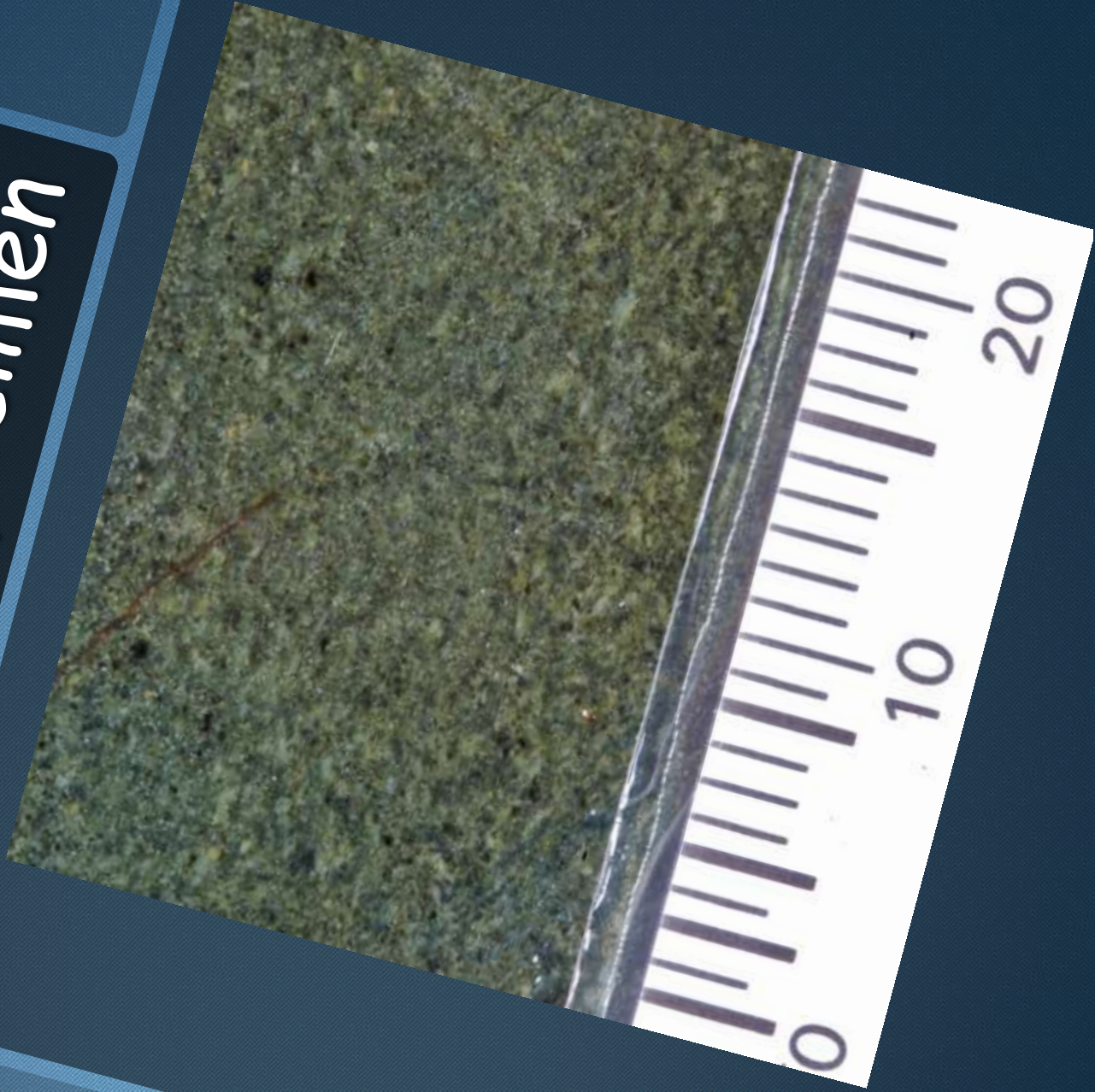


Sill Centre: XPL

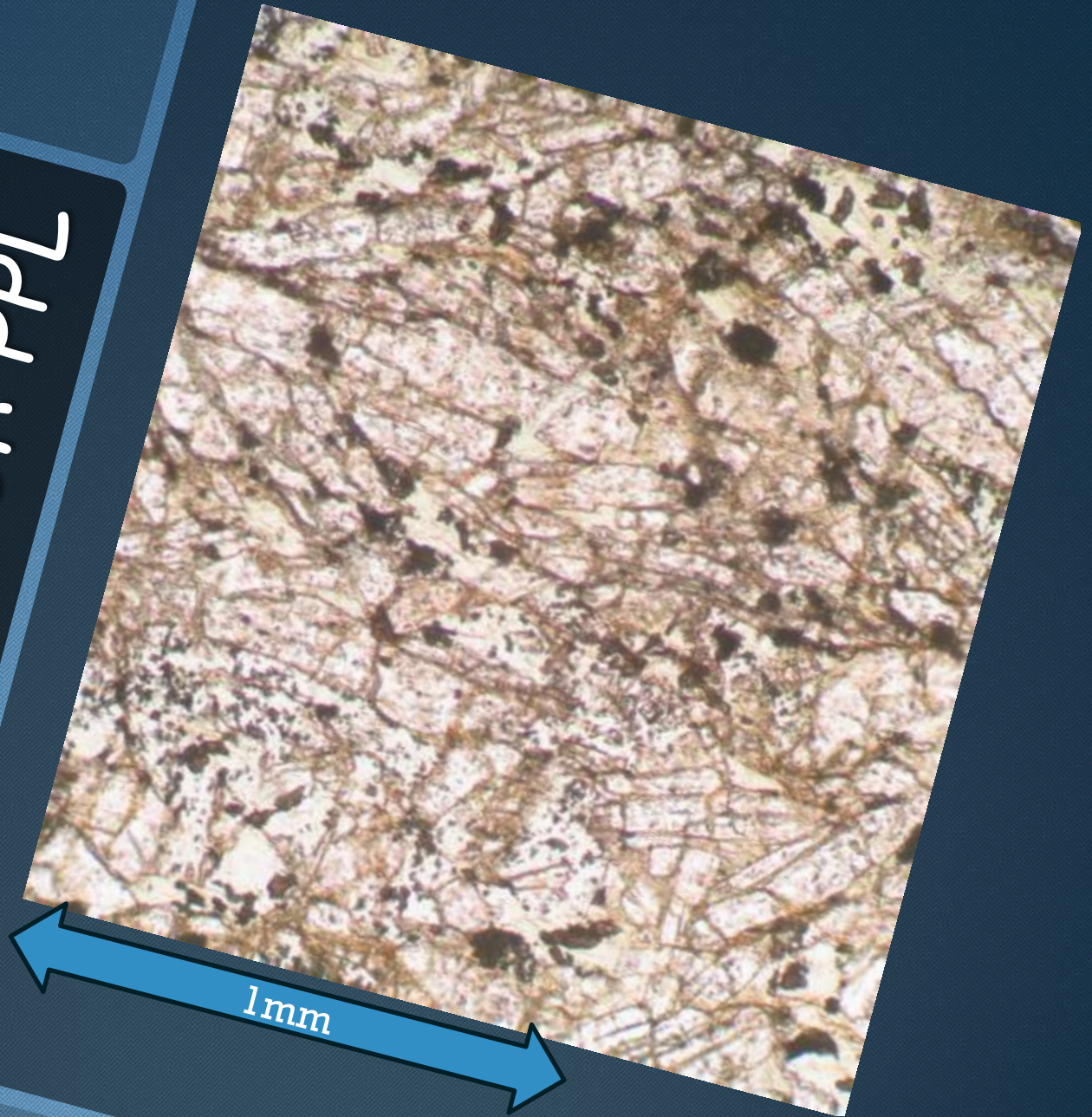


1mm

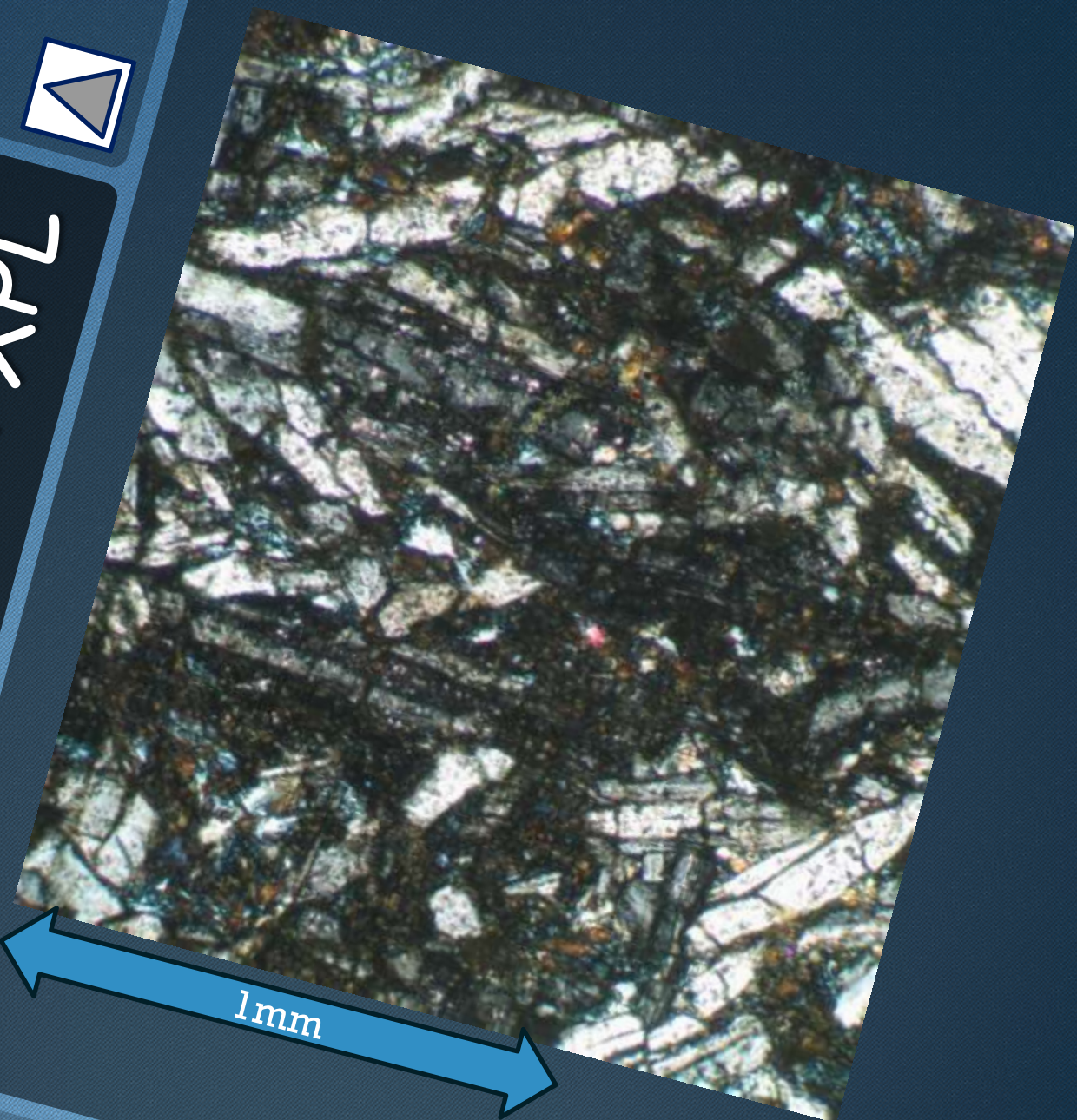
Near Contact: Hand Specimen



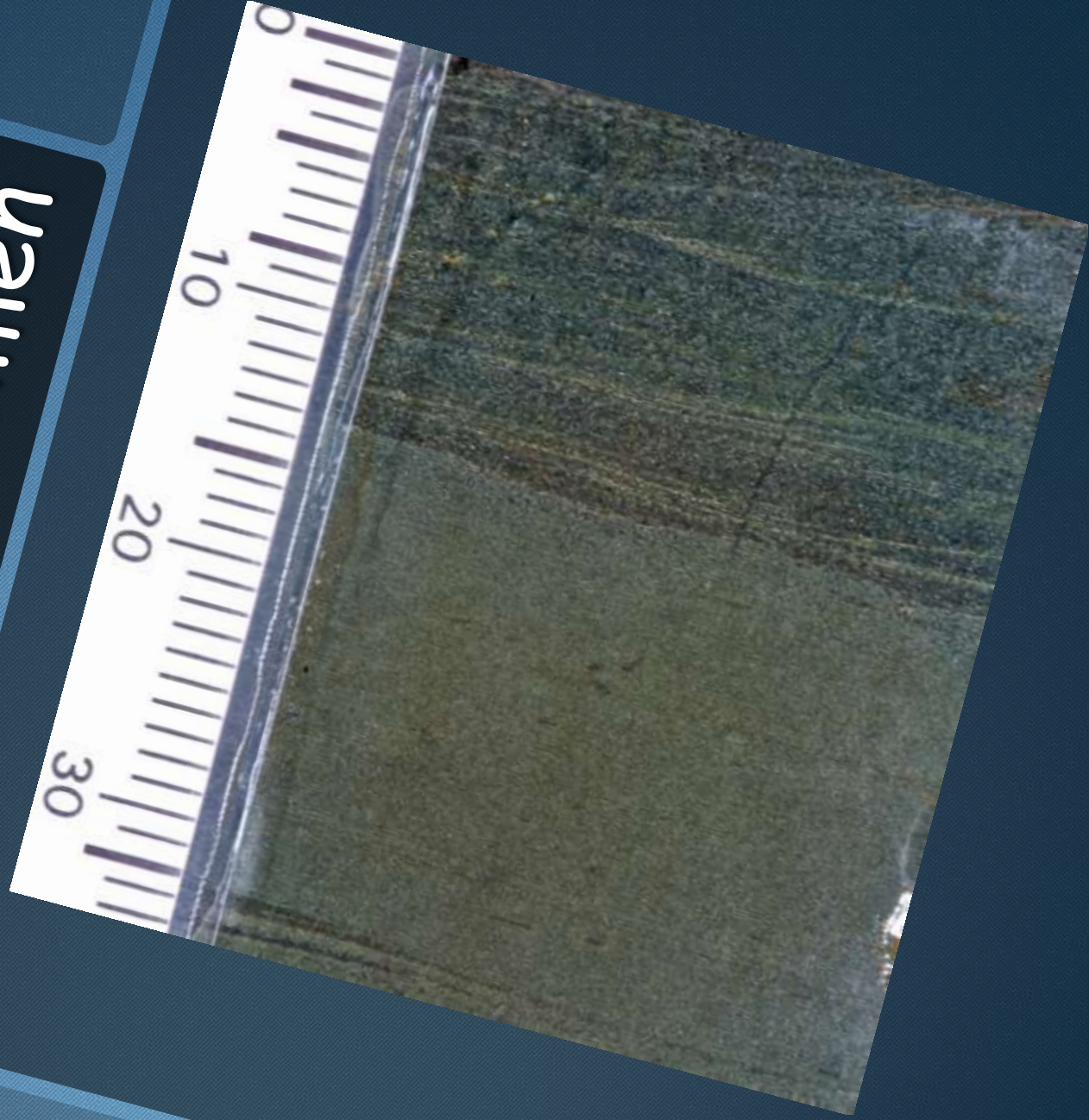
Near Contact: PPL



Near Contact: XPL



Sediments: Hand Specimen



Sediments : PPL



Sediments: XPL

